

Quick Connect Unions

SECTION FIVE

Knuckle Union Features and Benefits

- Used to connect and disconnect pipe work or valves quickly and easily from pumps and existing installations
- Ultimate flexibility around pumps
- Quick connect/disconnect solution around pumps or along the trunk of a pipe
- 9° 'Knuckle' movement providing greater flexibility at installation time, removing the necessity of the pipe work having to line up exactly with your pump
- Pump can easily be removed or installed from system for servicing by undoing common nut
- Pump can be misaligned from pipe work by a total of 9°
- Multiple configurations enables this fitting to meet the needs of just about any situation
- Ability to connect to poly pipe applications directly from the pump or in-line
- Fits onto the extensive range of Hansen *Easy Fit & True Fit* Pipe Fittings

Barrel Union Features and Benefits

- Designed to enable Quick Connect / Disconnect around pumps, tanks, dairy sheds and irrigation
- Flat face for easy uninstal makes uninstalling pumps & pipe work a breeze!
- Strong & Compact, perfect solution for tight spaces
- When the common nut is wound off, the pipe simply 'slips down'
- Great for tight spaces that have little room for connecting & disconnecting
- Ideal for connecting and disconnecting larger pump and pipes
- Perfect for off centred pipe work
- Ability to connect / disconnect from pump or along the trunk of a pipe
- Multiple configurations enables this fitting to meet the needs of just about any situation
- Ability to connect to pipe applications directly from the pump or in-line
- Fits onto the extensive range of Hansen *Easy Fit & True Fit* Pipe Fittings

Standars & Approvals

AS/NZS 4020: Hansen *Quick Connect* Unions meet the requirements for products in contact with drinking water as per AS/NZS 4020 Australia & New Zealand drinking water standard. The equivalent standard to AS/NZS4020 is BS 6920.

WRAS: Hansen *Quick Connect* Barrel Unions carry the WRAS approval by the Water Research Council in the UK which is the highest recognised water testing organisation in the world. A WRAS approved fitting must not cause waste, misuse, undue consumption or contamination of the water supply and must be of an appropriate quality and standard.

Barrel Union



Knuckle Union



After the success of Hansen *Easy Fit* Pipe Fittings and *True Fit* Threaded Fittings the next obvious product range to add to the already extensive Hansen Range was Unions.

The Hansen *Quick Connect* Union range was added in the late 1990's and is designed and manufactured to the same high quality and principals as the rest of the Hansen range.

The Hansen *Quick Connect* Knuckle Union makes removing or installing a pump from your system a breeze as all you have to do is undo the common nut. The Knuckle Union has the added benefit of a 9 degree 'Knuckle' movement providing greater flexibility at installation time, removing the necessity of the pipe work having to line up exactly with your pump.

The Hansen *Quick Connect* Unions are suitable for many types of fluid and fits easily onto Hansen *Easy Fit* Pipe Fittings and *True Fit* Threaded Fittings.

With over 60 years experience in manufacturing, Hansen Products knows the importance that pipe fittings play in the performance and control of fluid delivery, flow and pressure within a pipe system. This has seen Hansen Products build a reputation for providing high performance, easy to use, innovative, simple products that provide our customers with "Best Installed Value". All Hansen products carry our Limited Lifetime Warranty*

*For more information on our warranty please visit www.hansenproducts.com/legal.htm

Conversion Chart

20° Celcius – 68° Fahrenheit

KNUCKLE UNION 10 Bar - 1000 kPa. - 145 psi

BARREL UNION 16 Bar - 1600 kPa. - 235 psi

KNUCKLE UNION

1/2" = 15mm

3/4" = 20mm

1" = 25mm

1 1/4" = 32mm

BARREL UNION

1/2" = 15mm

3/4" = 20mm

1" = 25mm

1 1/4" = 32mm

1 1/2" = 40mm

2" = 50mm

Quick Connect Knuckle Unions

Used to connect and disconnect pipe work or valves quickly and easily from pumps and existing installations. Total of 9 degrees socket movement.



Knuckle Union Assembled Units
Male BSPT x Female BSPT

Code	Size	Pack Size	RRP € excl VAT
KU20M20F	20mm x 20mm	EA	15.39
KU25M25F	25mm x 25mm	EA	16.56
KU32M32F	32mm x 32mm	EA	17.36

Quick Connect Knuckle Union Components

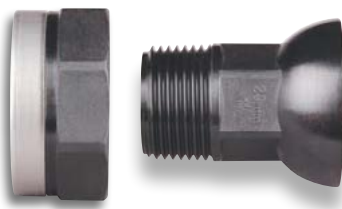
Used to connect and disconnect pipe work or valves quickly and easily from pumps and existing installations. Total of 9 degrees socket movement.

Ball x Female Thread



Code	Size	Pack Size	RRP € excl VAT
KUB20F	20mm	EA	7.69
KUB25F	25mm	EA	8.11
KUB32F	32mm	EA	8.69

Knuckle Union Socket x Male Thread
(includes common nut)



common nut

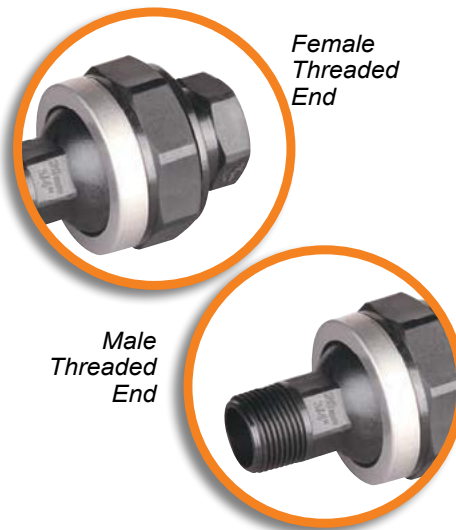
Code	Size	Pack Size	RRP € excl VAT
KUS20M	20mm	EA	7.69
KUS25M	25mm	EA	8.28
KUS32M	32mm	EA	8.69

Hansen Knuckle Union - Ultimate Flexibility Around Pumps

The Hansen *Quick Connect* Knuckle Union is the ultimate quick connect/disconnect solution around pumps. With a flexible 'knuckle' joint of up to 9 degrees movement, now you don't have to worry if your pipe work doesn't line up exactly with your pump, the flexible Hansen *Quick Connect* Knuckle Union takes care of that for you!

Multiple Configurations

Multiple connections enables this fitting to meet the needs of just about any situation. All connections available in sizes 20mm, 25mm or 32mm ($\frac{3}{4}$ ", 1", $1\frac{1}{4}$ " BSPT).



IDEAL FOR...

- Pump or pipe work off centre and needing flexibility
- Connecting to pipe applications directly from the pump or in-line
- Connect/disconnect from pump or along the trunk of a pipe

Quick Connect Barrel Unions

Designed to enable Quick Connect/Disconnect around Pumps, Tanks, Dairy Sheds, Industry and Irrigation.



Barrel Unions
 BSPT

Code	Size	Pack Size	RRP € excl VAT
SBU15	15mm	EA	6.38
SBU20	20mm	EA	15.72
SBU25	25mm	EA	16.42
SBU2520	25mm x 20mm	EA	16.42
SBU32	32mm	EA	19.33
SBU3225	32mm x 25mm	EA	19.33
SBU40	40mm	EA	20.97
SBU50	50mm	EA	25.50

Hansen Barrel Union - Strong & Compact. Perfect Solution for Tight Spaces

Easy Slip Down Action makes uninstalling pumps & pipe work a breeze! When the common nut is wound off, the pipe simply 'slips down' with virtually no extra forward or backward movement required to separate the connection.

Available in sizes: 15mm, 20mm, 25mm, 32mm, 40mm, 50mm, 25x20mm, 32x25mm. (1/2" 3/4", 1", 1 1/4", 1 1/2", 2", 1"x 3/4", 1 1/4"x1" BSP).



IDEAL FOR...

- Tight spaces that have little room for connecting & disconnecting
- Connecting and disconnecting larger pump and pipe sizes
- Where adjustment for off centred pipe work isn't a concern
- Connect/disconnect from pump or along the trunk of a pipe