

Quick Connect Unions



Best Installed Value

SECTION ELEVEN

TECHNICAL SPECIFICATIONS

Knuckle Union



Barrel Union



Quick Connect Unions
Technical Specifications

Quick Connect Knuckle Unions Features and Benefits

- Used to connect and disconnect pipe work or valves quickly and easily from pumps and existing installations
- Ultimate flexibility around pumps
- Quick connect/disconnect solution around pumps or along the trunk of a pipe
- 9° 'Knuckle' movement providing greater flexibility at installation time, removing the necessity of the pipe work having to line up exactly with your pump
- Pump can easily be removed or installed from system for servicing by undoing common nut
- Pump can be misaligned from pipe work by a total of 9°
- Multiple configurations enables this fitting to meet the needs of just about any situation
- Ability to connect to pipe applications directly from the pump or in-line
- Fits onto the extensive range of Hansen *Easy Fit & True Fit* Pipe Fittings

Quick Connect Knuckle Unions Parts and Materials

- **Body and Nuts** - Highest Quality Glass Fibre Reinforced Nylon
- **O-Ring** - Nitrile Rubber
- **Ring** - Stainless Steel

Quick Connect Knuckle Unions Working Pressure

Hansen *Quick Connect* Knuckle Union Maximum Working Pressure; 10 Bar (1000 kPa. 145 psi) @ 20°C

Quick Connect Knuckle Unions Approvals

AS/NZS 4020: Hansen *Quick Connect* Unions meet the requirements for products in contact with drinking water as per AS/NZS 4020 Australia & New Zealand drinking water standard.

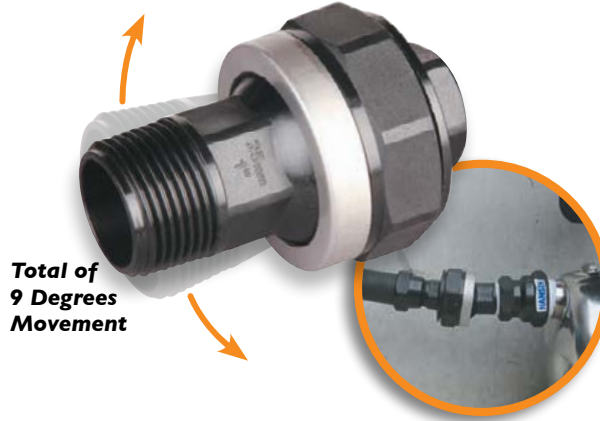
The equivalent standard to AS/NZS4020 is BS 6920.

Fire Rating UL94HB

Hansen Knuckle Union - Ultimate Flexibility

Ultimate Flexibility Around Pumps

The Hansen *Quick Connect* Knuckle Union is the ultimate quick connect/disconnect solution around pumps. With a flexible 'knuckle' joint of up to 9 degrees movement, now you don't have to worry if your pipe work doesn't line up exactly with your pump, the flexible Hansen *Quick Connect* Knuckle Union takes care of that for you!

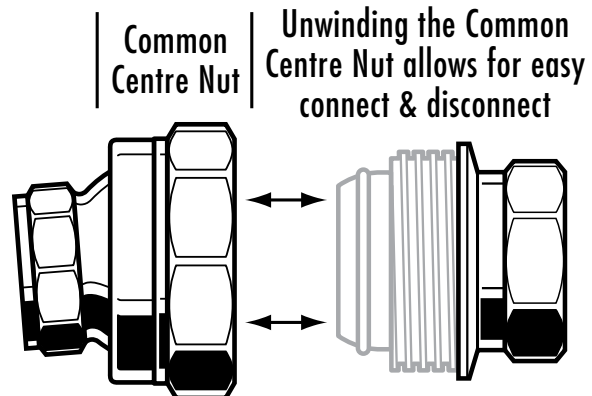
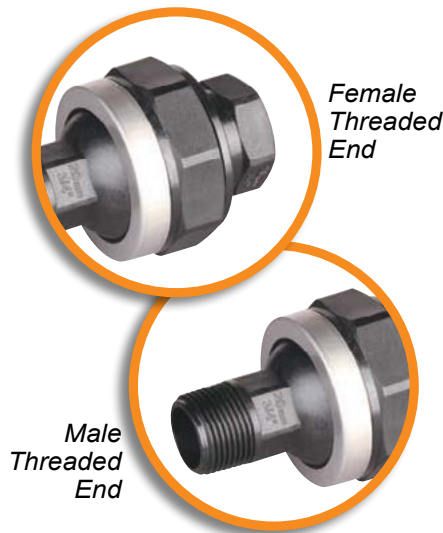


IDEAL FOR...

- Pump or pipe work off centre and needing flexibility
- Connecting to pipe applications directly from the pump or in-line
- Connect/disconnect from pump or along the trunk of a pipe

Multiple Configurations

Multiple connections enables this fitting to meet the needs of just about any situation. All connections available in sizes 20mm, 25mm or 32mm ($\frac{3}{4}$ ", 1", $1\frac{1}{4}$ " BSPT).



Quick Connect Knuckle Unions Installation Steps

All pipe work must be adequately supported



1 Line up the two ends of the *Quick Connect* Knuckle Union



2 Join the two parts together by winding the Common Centre Nut on to the matching Male Thread



3 Insure the Common Centre Nut is firmly tightened. **DO NOT OVER TIGHTEN**



4 Finish connection, Poly Pipe connected with *Quick Connect* Knuckle Union

*Photos shown in Poly x Poly.
Many other configurations available.*

Quick Connect Barrel Unions Features and Benefits

- *Designed to enable Quick Connect / disconnect around pumps, tanks, dairy sheds and irrigation*
- *Flat face for easy uninstal makes uninstalling pumps & pipe work a breeze!*
- *Strong & compact, perfect solution for tight spaces*
- *When the common nut is wound off, the pipe simply 'slips down'*
- *Great for tight spaces that have little room for connecting & disconnecting*
- *Ideal for connecting and disconnecting larger pump and pipes*
- *Perfect for off centred pipe work*
- *Ability to connect / disconnect from pump or along the trunk of a pipe*
- *Multiple configurations enables this fitting to meet the needs of just about any situation*
- *Ability to connect to pipe applications directly from the pump or in-line*

Quick Connect Barrel Unions Parts and Materials

Body and Nuts - Highest Quality Glass Fibre Reinforced Nylon

Quick Connect Barrel Unions Working Pressure

Hansen Quick Connect Barrel Union Maximum Working Pressure;
16 Bar (1600 kPa. 235 psi) @ 20°C

Quick Connect Barrel Unions Approvals

WRAS: Hansen *Quick Connect* Barrel Unions carry the WRAS approval by the Water Research Council in the UK which is the highest recognised water testing organisation in the world. A WRAS approved fitting must not cause waste, misuse, undue consumption or contamination of the water supply and must be of an appropriate quality and standard.

AS/NZS 4020: Hansen *Quick Connect* Unions meet the requirements for products in contact with drinking water as per AS/NZS 4020 Australia & New Zealand drinking water standard.

The equivalent standard to AS/NZS4020 is BS 6920.

Fire Rating UL94HB

See our website for further details.

Hansen Barrel Union - Strong & Compact

Perfect Solution For Tight Spaces

Aside from being a great choice for your every day quick connect/disconnect union needs, the Hansen *Quick Connect* Barrel Union's compact design makes it the perfect choice for tight spaces with little movement to spare.

Available in sizes
 15mm, 20mm, 25mm, 32mm, 40mm,
 50mm, 25x20mm, 32x25mm.
 (1/2" 3/4", 1", 1 1/4", 1 1/2",
 2", 1"x 3/4", 1 1/4"x1"
 BSP).



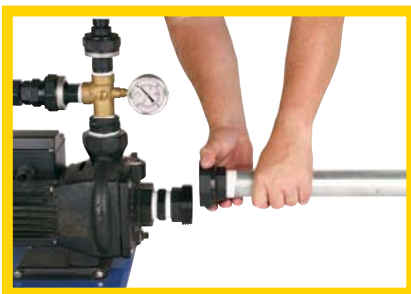
Easy Slip Down Action

The easy slip down action makes uninstalling pumps & pipe work a breeze! When the common nut is wound off, the pipe simply 'slips down' with virtually no extra forward or backward movement required to separate the connection.

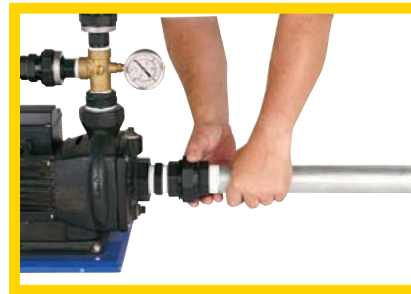
IDEAL FOR...

- Tight spaces that have little room for connecting & disconnecting
- Connecting and disconnecting larger pump and pipe sizes
- Where adjustment for off centred pipe work isn't a concern
- Connect/disconnect from pump or along the trunk of a pipe

Quick Connect Barrel Unions Quick & Easy Installation - Pump to Pipe



1 Disconnect current pipe from pump by unwinding the Common Centre Nut



2 Connect the new pipe to pump by winding the Common Centre Nut onto the matching male thread

Quick Connect Barrel Unions Quick & Easy Installation - Pipe to Pipe



1 Disconnect current pipe by unwinding the Common Centre Nut

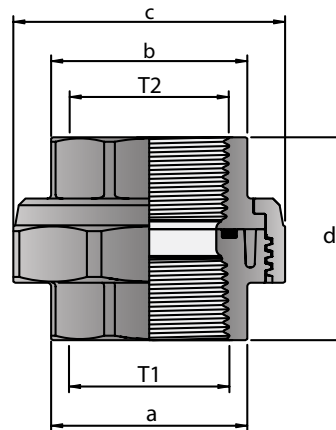


2 Connect new pipe to pipe by winding the Common Centre Nut onto the matching male thread

Dimensions

Barrel Union Code: SBU

Product Code	T1 BSPF	T2 BSPF	a (AF) mm	b (AF) mm	c (AF) mm	d mm
SBU15	1/2" (15mm)	1/2" (15mm)	28	28	45	43
SBU20	3/4" (20mm)	3/4" (20mm)	34	34	51	46
SBU25	1" (25mm)	1" (25mm)	41	41	62	53
SBU2520	1" (25mm)	3/4" (20mm)	41	34	62	53
SBU32	1 1/4" (32mm)	1 1/4" (32mm)	51	51	71	55
SBU3225	1 1/4" (32mm)	1" (25mm)	51	41	71	55
SBU40	1 1/2" (40mm)	1 1/2" (40mm)	58	58	81	64
SBU50	2" (50mm)	2" (50mm)	71	71	96	67



AF = Across Flats

Barrel Union O-Ring Sizes

Product Code	T1 BSPF	O-Ring Sizes
SBU15	1/2" (15mm)	18 x 2.5 N70
SBU20	3/4" (20mm)	24 x 2.5 N70
SBU25	1" (25mm)	30 x 3.0 N70
SBU2520	1" x 3/4" (25mm x 20mm)	30 x 3.0 N70
SBU32	1 1/4" (32mm)	38 x 3.0 N70
SBU3225	1 1/4" x 1" (32mm x 25mm)	38 x 3.0 N70
SBU40	1 1/2" (40mm)	44 x 3.0 N70
SBU50	2" (50mm)	56 x 3.0 N70

N70= Nitrile Rubber
70 Shore Hardness

N = Nitrile Rubber, 70 = Shore Hardness

Specifications and sizes may change without prior notice

Quick Connect Knuckle and Barrel Unions Chemical Resistance Chart

CHEMICAL TYPE	RESISTANCE LEVEL		
	Good	OK But Check Further	BAD Try to Avoid
Acids Weak			X
Acids Strong			X
Organic Acids Weak		X	
Organic Acids Strong			X
Bases Weak	X		
Bases Strong		X	
Bleach			X
CHEMICAL TYPE	RESISTANCE LEVEL		
Automotive Fuel	X		
Automotive Lubricants	X		
Hydraulic Fluids			X
CHEMICAL TYPE	RESISTANCE LEVEL		
Solvents		X	
Hydrocarbons	X		
Halogens			X
Alcohols			X
Aldehydes			X
Amines			X
Esters			X
Ethers			X
Ketones			X
CHEMICAL TYPE	RESISTANCE LEVEL		
Detergents	X		
Oxidising Agents			X
Weak Hydrogen Peroxide		X	
Phenols			X

PLEASE NOTE: This chart is intended as a basic guide only. The resistance to a given chemical will vary with temperature & concentrations. Some chemicals within the group mentioned may result in different rating. For further information, please email us with your specific question.

Quick Connect Knuckle and Barrel Unions Frequently Asked Questions

- Q** Can I use your Hansen *Quick Connect* Union for easy service of my pump?
- A** Yes, by installing a Hansen *Quick Connect* Union on both the inlet and outlet you effectively have a barrel union and joiner in one fitting which allows you to undo two common centre nuts and easily lift your pump out for service.
- Q** I have a situation where I would like to connect into an existing stock water line out the back of the farm for filling a spray tank to save travel time when spraying. Can I use a Hansen *Quick Connect* Union for this purpose?
- A** Yes, as long as there is an isolating valve nearby you can install a Hansen *Quick Connect* Union and purchase a ball to pipe tail for your tank fill pipe length and quickly hook into this line when required.
- Q** I've had to replace my suction fitting on my pump as it snapped and now I can't align my pump back to the bolts it was held in place with. Will your Hansen *Quick Connect* Union help me here?
- A** Yes, the reason your fitting failed was the same reason you can't line up the bolt holes now, the suction line was never lined up with the pump intake. Try a male to Hansen *Quick Connect* Union in the size you require. This will also mean you can bolt down your pump first, attach both parts of the Hansen *Quick Connect* Union to the pump and pipe and then just connect the fitting with common centre nut.

Knuckle Union Features

HIGH QUALITY DURABLE MATERIALS

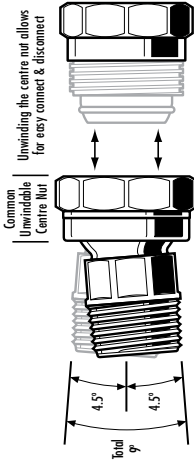
Manufactured from Strong 304 grade stainless steel and UV Stabilised High Quality Glass Fibre Reinforced Nylon giving a weather, termite, fungi and bacterial resistance

MAXIMUM WORKING PRESSURE
10 Bar (145 psi)
@ 20°C



ULTIMATE FLEXIBILITY AROUND PUMPS

The Hansen Knuckle Union is the ultimate quick connect/disconnect solution around pumps. With a flexible 'knuckle' joint of up to 9 degrees movement, now you don't have to worry if your pipe work doesn't line up exactly with your pump, the flexible Hansen Knuckle Union takes care of that for you!



Total of 9 Degrees Movement

TIME TESTED CONNECTIONS

Uses the same time tested Hansen Easy Fit and True Fit connections as in other ranges.

Female Threaded Socket End



Male Threaded Ball End



MULTIPLE SIZE CONFIGURATIONS

Available in male female thread configurations in sizes 1/2", 3/4", 1" (20mm, 25mm or 32mm).

POTABLE WATER APPROVED

Materials approved for use with Potable (drinkable) Water
AS/NZS 4020



EASY TO USE

As with all Hansen fittings, simplicity & ease of use remain at the core of the Hansen Quick Connect Knuckle Union.

3. Insure the Common Centre Nut is firmly tightened. Do not over tighten.



2. Join the two parts together by winding the Common Centre Nut onto the matching Male Thread

1. Line up the two ends of the Quick Connect Knuckle Union



HD8164 1705

501 6918H

Barrel Union Features

HIGH QUALITY DURABLE MATERIALS

Manufactured from UV Stabilised High Quality Glass Fibre Reinforced Nylon and Nitrile Rubber O-Ring giving a weather, termite, fungi and bacterial resistance

O-RING SEAL

For a leak proof connection.



STRONG COMPACT DESIGN

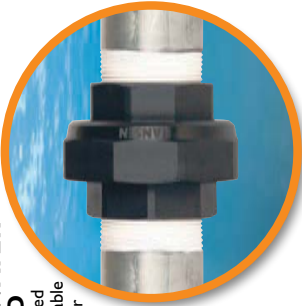
The compact design of the Hansen Quick Connect Barrel Union makes it especially suited to tight spaces where there is very little room for movement when connecting and disconnecting pump or pipe.



POTABLE WATER APPROVED

Materials approved for use with Potable (drinkable) Water

AS/NZS 4020



EASY TO USE

As with all Hansen fittings, simplicity & ease of use remain at the core of the Hansen Quick Connect Barrel Union.

PUMP TO PIPE

1. Disconnect current pipe from pump by unwinding the Common Centre Nut

2. Connect the new pipe to pump by winding the Common Centre Nut onto the matching male thread



EASY SLIP DOWN ACTION

The easy slip down action makes uninstalling pumps & pipe work a breeze! When the common nut is wound off, the pipe simply 'slips down' with virtually no extra forward or backward movement required to separate the connection.



MAXIMUM WORKING PRESSURE

16 Bar (235 psi) @ 20°C

PRECISION HEAVY DUTY TAPERED THREADS

Gives a Strong Reliable Seal. Material is strong enough to minimise potential cross threading.



Available in Sizes:

15mm, 20mm, 25mm, 32mm, 40mm, 50mm, 25x20mm, 32x25mm (1/2", 3/4", 1", 1-1/4", 1-1/2", 2", 1"x3/4", 1-1/4"x1")

Strong, Compact and Easy to Use Unions

www.hansenproducts.com

